



## 2021 Lilly Community Scholar

Macy is the daughter of Richard and Kristi-Miller Johnson of Montezuma. She plans to attend Rose-Hulman Institute of Technology to pursue a degree in Optical Engineering. Macy is a member of Riverton Parke's cheerleading squad, band, FFA, National Honor Society, Academic Spell Bowl, Academic Super Bowl, yearbook, Autonomous Vehicle Challenge, and Student Council. Macy currently is ranked 1st in her class with a 4.273 GPA.

Of the award, Johnson stated, "Thank you to my family for being my biggest support in life, my teachers throughout the years for pushing me in the right direction, and the Parke County Community Foundation for presenting this opportunity to all Lilly scholars, past and present."

In addition to tuition, the scholarship includes an annual stipend of \$900 to cover the cost of required books, equipment and fees. The primary purposes of the Lilly Endowment Community Scholarship Program are 1) to help raise the level of educational attainment in Indiana; 2) to increase awareness of the beneficial roles Indiana community foundations can play in their communities; and 3) to encourage and support the efforts of current and past Lilly Endowment Community Scholars to engage with each other and with Indiana business, governmental, educational, nonprofit and civic leaders to improve the quality of life in Indiana generally and in local communities throughout the state.

The Lilly Endowment Community Scholar was nominated from numerous applications submitted. The Foundation utilizes a scholarship selection sub-committee comprised of individuals not associated in any other capacity with the Foundation. Finalists for the Lilly Endowment Community Scholarship are then forwarded to Independent Colleges of Indiana (ICI) for final selection. Independent Colleges of Indiana is a non-profit corporation that represents 30 regionally accredited degree-granting, non-profit, private colleges and universities in the state and is the statewide administrator of the scholarship program.



### Parke County Community Foundation

115 N. Market Street  
PO Box 276  
Rockville, IN 47872

Phone: 765-569-7223  
Fax: 765-569-5383  
E-mail: [foundation@parkeccf.org](mailto:foundation@parkeccf.org)

For good...For ever... For Parke County



# Foundation

## Grants & Scholarships Winter 2020

### BOARD OF DIRECTORS

#### Officers:

Karen Stutler  
*Chair*  
Nick Sauter  
*Vice Chair*

Karen Durr  
*Secretary*

Mark Davis  
*Treasurer*

#### Directors:

Nancy Eldridge  
Mary Hanner  
Sharon Harmon  
Rick Hobbs  
Evan Lunsford  
Jeremy Montgomery

Paula Rahn  
Marvin Rode  
Chris Sanders

### FOUNDATION STAFF

Brad C. Bumgardner  
Executive Director  
Marcia Akers  
Colleen Engle



For good... For ever... For Parke County!



### Foundation Grants \$56,000 to the Ritz Theater Marquee Project

The Board of the Parke County Community Foundation was pleased to grant more than \$56,000 to help make the Ritz Theater Marquee restoration project a reality. The marquee that we now see was added in the former opera house in the late 1940's with its current semi circular shaped, stream-line style. The Ritz has been the home of the Parke Players since 1971 and, since that time, has been constantly under renovation and restoration.

In 2013, the Foundation hosted a \$150K fundraising effort to provide a digital projector and surround sound in order to host 1st run movies. This has allowed dozens of movie premiers to take place in the County Seat where admission fees and concession prices are half the price of larger, metropolitan area theaters.

Several donor funds at the Foundation made up the \$56,000 grant. They are as follows:

- \* **Foundation Community Grants Fund**
- \* **Ben & Lorraine Morlan Ritz Theater Fund**
- \* **Overpeck Ritz Theater Fund**
- \* **Overpeck Restoration Fund**



### Foundation Investment Report

At the time of press (12/14/2020) PCCF investments have experienced solid returns year to date. Following are the 1, 3, 5, 10, and 15 year returns:

YTD	1 Year	3 Year	5 Year	10 Year	15 Year
10.49	12.61	8.65	10.0	9.31	7.80

With a forever funding horizon, the Foundation investment philosophy prioritizes the preservation of the original donor gift. Gifts are invested in order to create annual income which is distributed to the charitable organization or purpose as designated by the donor. A good number of the endowed funds donors created with the Foundation are given as unrestricted, which means the Foundation has the discretion to grant those annual earnings to meet pressing needs in Parke County. These funds are called Legacy Funds. The Foundation holds more than 40 Legacy Heritage Funds (\$10,000 or more) and five Legacy Heirloom Funds (\$100,000 or more). Earnings of more than \$150K are distributed from these funds annually. Check our website or contact the Foundation at [www.parkeccf.org](http://www.parkeccf.org), or call us at 765-569-7223 for more information on how you can leave a lasting legacy in Parke County.

### Lilly Endowment Inc. \$100,000 Grant



The Parke County Community Foundation is excited to share that we have secured a \$100,000 grant from Lilly Endowment Inc. to create a "Shared Space/Co-Work Facility" which will help address some of the greatest challenges and opportunities in our community. This co-work facility, located north on Highway 41, hopes to assist in enhancing the "Quality of Life" and the "Quality of Place" for the citizens of Parke County.

#### Challenges to be Addressed by the Presence of a Co-Work Facility:

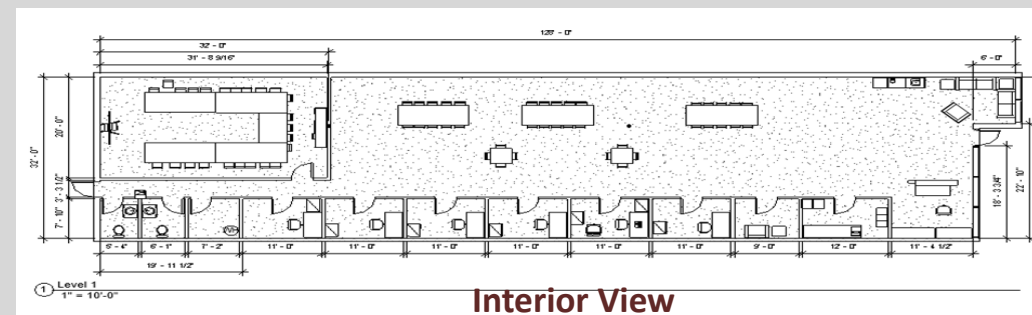
- \* Parke County is a sparsely populated county with a rugged topography and irregular data coverage. This has created a technology challenge for access to reliable internet and cell service for local citizens, businesses and entrepreneurs. Through Bloomingdale Home Telephone, this new facility will offer the fastest internet in West Central Indiana.
- \* Quality, affordable office space for start-up businesses is currently very difficult to secure. The 6 private offices in the shared facility will provide designated space, and access for its member entrepreneurs and allow for the launch of new business start-ups.

#### Opportunities:

- \* With the gift of the 11,000 sq. ft. structure by Wes Burress to the Parke County Community Foundation, business and office space will be maximized at the Highway 41 North Corridor in Rockville.
- \* The Foundation has increased Parking by 30 spaces for the co-work facility in the business plaza. Seven other businesses currently are located there.

This co-work facility will be ideal for entrepreneurs looking for a better alternative to working from home. These spaces are often home to local start-up businesses, some of whom are just getting their name out and not tied to any specific business or industry. The benefits to these spaces is that they afford start-ups with an opportunity to stay lean, an inexpensive avenue for community and collaboration, as well as lively and dynamic atmosphere that inspires productivity. The co-work facility will have several membership options ranging from \$40.00 monthly for individual access up to \$300 monthly for private office space. The facility will have a large conference room as well which will be available to all members.

### Coming Soon~ Spring 2021



For more information, contact the Foundation at 765-569-7223